



The Good News

February 2015

For the members and friends of the First Presbyterian Church of Pittsford

FROM THE PASTOR'S PEN-CELL

LECTIONARY FOR THE MONTH OF FEBRUARY

4th Sunday in Ordinary Time

February 1
Deuteronomy 18:15-20
Psalm 111
1 Corinthians 8:1-13
Mark 1:21-28

5th Sunday in Ordinary Time

February 8
Isaiah 40:21-31
Psalm 147:1-11, 20c
1 Corinthians 9:16-23
Mark 1:29-39

Transfiguration of the Lord

February 15
2 Kings 2:1-12
Psalm 50:1-6
2 Corinthians 4:3-6
Mark 9:2-9

Ash Wednesday

February 18
Joel 2:1-2, 12-17 or
Isaiah 58:1-12
Psalm 51:1-17
2 Corinthians 5:20b-6:10
Matthew 6:1-6, 16-21

1st Sunday in Lent

February 22
Genesis 9:8-17
Psalm: 25:1-10
1 Peter 3:18-22
Mark 1:9-15

Valentine's Day, a day full of symbols of love. The usual ones, of course, include hearts and flowers, little cupids and those flirty candy hearts with sayings such as "U R Hot" on them.



But, if we were to think that Valentine's Day might occur on a Sunday some year, we might make the obvious leap to the short Biblical verse, "God is love." We could think about all the servant language that accompanies discipleship and how serving God involves making a bond of love.

We sometimes confuse the kinds of love talked about in the Bible. Especially when you have Pope Francis making some daring comments like he did in a somewhat unguarded moment in the Philippines this past week when he said, "Some think, excuse me if I use the word, that in order to be good Catholics, we have to be like rabbits – but no" and he talked about the church promoting "responsible parenthood." He then went on to make an illustration of a woman who had already had seven children by Caesarean section and had put her own life at risk by becoming pregnant again. He said that he chided her for "tempting God."

So it is with some hesitancy that I would venture into a topic that would take us toward Valentine's Day and expressions of affection that we would classify as "love." Would it not be safer to think a little about "Presidents' Day?" Well, that could shift us from theological and emotional conversation to political rumination which could be worse.

Maybe as we approach Valentine's Day when people will be expressing their love for the special folks in their lives, it might be a great time to remind us of a bigger picture and say that "God loves the whole world and calls us to love it with the same kind of sacrificial, joy-filled and transformational love that God has demonstrated from the beginning.

So instead of heading out to an overpriced brunch with your sweethearts, might we encourage your romantic nature to make a statement this Valentine's Day by using a candlelit dinner to prompt us to do something loving together that would share God's love to others? Instead of trying to find the perfect gift for a sweetie, perhaps we could gift our time to someone who may be lonely on what is for many people the loneliest of days. Some refer to Valentine's Day as "Single Awareness Day." While taking that romantic cross country trek through the park or walk along the road, maybe couples could pick up some trash or do a little creation care. Valentine's Day could provide an opportunity to break the chains of sentimentality and cultural obligation and become more serious about loving God's good creation.

But since the young observe our actions we might be interested in what children think it means to truly love someone. Here is a collection gathered from Art Linkletter and others over the years.

- Love is that first feeling you feel before all the bad stuff gets in the way.
- When my grandmother got arthritis, she couldn't bend over and paint her toenails anymore. So my grandfather does it for her all the time, even when his hands got arthritis, too. That's love.
- Love is when someone hurts you. And you get so mad, but you don't yell at him because you know it would hurt his feelings.
- Love is when my mommy makes coffee for my daddy and she takes a sip before giving it to him, to make sure the taste is okay.
- If you want to learn to love better, you should start with a friend who you hate.
- There are two kinds of love. Our love. God's love. But God makes both kinds of them.
- Love is like a little old woman and a little old man who are still friends even after they've know each other so well.

Rita Rudner said, "I think men who have a pierced ear are better prepared for marriage. They've experienced pain and bought jewelry." But I say that a better thought for Valentines this month might come from Mother Teresa who said, "Spread love everywhere you go: first of all in your own house. Give love to your children, to your wife or husband, to a next-door neighbor. Let no one ever come to you without leaving better and happier. Be the living expression of God's kindness: kindness in your face, kindness in your eyes, kindness in your smile, kindness in your warm greeting." And this would be good advice for our church, too.

Bruce

A GREAT WAY YOU CAN HELP A HURTING FRIEND ~ Do you have a friend, neighbor, coworker, or relative who has suffered a loss or is going through a difficult time? Here's a great way you can help them – tell them about our Stephen Ministry! Stephen Ministers are members of First Presbyterian Church who have received special training to provide high quality, confidential, one-to-one, Christian care to hurting people. Stephen Ministers meet weekly with their care receivers to listen, care, encourage, and provide emotional and spiritual support. (Males are matched with males, and females are matched with females). The caring relationship lasts for as long as the person needs care. It's free, and it's a powerful way you can help a hurting friend. To find out more about Stephen Ministry for you or someone you know, talk with one of our Stephen Ministry Leaders: *Jane Hunter, Alice O'Dwyer, Barbara Smith, Dick Sprenkle or Carol Tiemann or one of our pastors*. Our Stephen Ministers are there to care!



UPCOMING DEACON FUN ACTIVITIES

RIT vs. Army Hockey Night—Friday, January 30—7:00 pm. Cost is \$10. Tickets available after church in Fellowship Hall or call Dan Traina at 208-6839 for info.

EUCHRE – Saturday, February 27 – 7:00 PM ~ 45 South Main Street, Pittsford

SUPPER CLUB – Sunday, March 1—5:00 PM in the Church Fellowship Hall & Kitchen. Cost is \$7.



Optimist Luncheon ~ February 13th, 2015: Take a trip back to the days when riding the Merry Go Round was a great outing – it still is ! Come and hear Carol Samuels, from the Osher Institute, talk about the “Golden Age of Carousels” in the early 20th Century. Come and relive History in this power point presentation. There will be some intriguing insights into what we now call Merry Go Rounds, such as the one at Ontario Beach Park, dating to 1905 and declared a Rochester landmark in 1960. Come ride with us !

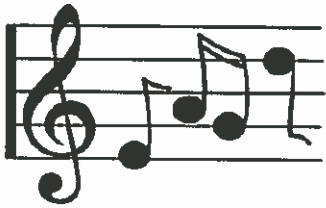
This will be a “Bring Your Own Sandwich Luncheon”, assembling at 12:30 PM, Lunch from 1:00 – 1:30 PM followed by the presentation. Coffee (DeCaf) and dessert provided. Please bring a non-perishable item for the Pittsford Food Cupboard. There is a \$1.00 charge to cover cost of dessert. See you in Fellowship Hall !

For those who may be planning to attend the Spring Optimist dinners, note, the **May and June** dates will be reversed. Arun (A-roon) Gandhi, a fifth generation nephew, of the late Indian spiritual leader will be with us **Friday May, 8th - not Friday June, 12th**. It is recommended, but not essential, that advance preparation be done. Some Biographical books, are available for loan, through the Pittsford Library (248-6275) Biography section, and perhaps DVDs. Barnes and Noble (586-6020 or (586 –4092) have books for purchase. A DVD, for \$10.00, can be ordered and delivered to your home within a week. Google is also a good resource.



STEWARDSHIP REPORT ~ We completed the 2015 Stewardship Campaign with 274 pledges totaling \$623,000. This represents the same number of pledges as last year, but an increase of \$24,000 or 4% above last year’s campaign. Commitments from repeat pledging units increased an average of 2%. We received 40 new pledges totaling \$57,000, a significant increase in new participation compared with last year. We are most grateful for the Stewardship response as well as from those who contribute through general offerings and directly support the various Mission activities of the church.





CONCERT SERIES 2014—2015

This year's concert series draws to a close with the U of R Choral Extravaganza on Sunday February 22, 2015 at 3:00 PM. Harold McAulliffe will again bring choral groups from the U of R Campus to perform in our sanctuary. It is a real treat to see and hear these young college students sing. It is also fun to watch these collegians gobble up the homemade cookies in Fellowship Hall afterwards.



News from the Nursery School

February is a month shorter in length, but action packed! February is community helper month, the dentist visits to talk to the children about the importance of taking care of their teeth and the postal carrier will visit to discuss their important job. She will then take with them Valentine's cards that the children have made for their parents. Parents will be offered the opportunity to have their children's speech screened by graduate students from Nazareth College. We also offer conferences for our parents, communication is very important. Of course, we celebrate Valentines' Day with cards and special games. We will also have a family Valentine's Day Party where the children will dance and play! We will have a week off for President's week. Our year is now more than half over. Thank you for your continued support.

Teresa Zatyko, Director, Pittsford Nursery School

MEET YOUR NEW CHURCH OFFICERS

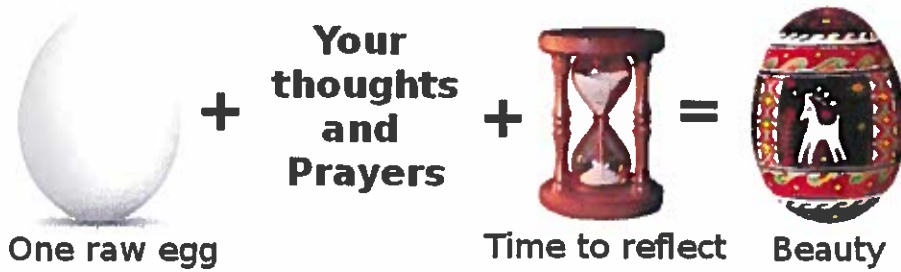
Bob Mecredy—Elder, Class of 2017

Bob has been a member of First Pres. for 20 years. He and his wife Margaret have two adult sons, Daniel and John. Bob is a retired nuclear engineer and was in management at Ginna Power Plant. He enjoys traveling, gardening, golf and family. Bob has been an elder, a trustee, on the organ committee and currently is Chair of our Presbytery Budget Development committee.

Vince Harper—Elder, Class of 2017

Vince, a relatively new member, has been here at First Pres. for about two years. He and his wife Cindy have three children, two boys and a girl. His career has been centered in commercial lending and his interests lie in learning about current issues and events. Vince enjoys activities with family, including golfing and boating. He appreciates that First has a family environment and likes that the clergy and members are so very welcoming.

Christian Education



Coming in lent

Egg decorating is a traditional Lenten way to connect to the season. Thursdays in March join us in creating **Pysanky**. These intricate designed eggs are used as a way to make yours prayers tangible during the Lenten season. These are eggs decorated while reflecting on renewal. 6-7:30 on 3/5, 3/12, 3/19, 3/26.



A **pysanka** is a Ukrainian Easter egg, decorated with traditional Ukrainian folk designs using a wax-resist (batik) method. The word *pysanka* comes from the verb *pysaty*, "to write", as the designs are not painted on, but written with beeswax.

This is open to all ages, however eggs are raw when decorated.

Lenten living

Lent begins on Ash Wednesday, February 18 this year. Christians have observed this season of the church year since the fourth century. It's traditionally a time of reflection, penitence and spiritual renewal before Easter.

During Lent, some Christians give up something that hinders their relationship with God. Others do something extra for their spiritual growth or make a special sacrifice. The key is to make Lent a memorable season of sincere spiritual growth — a time that can set the tone for the rest of the year.

Sunday School Studies Mission

Heifer Season is upon us. Time for children grades Pre-K thorough 5th grade to start creating masterpieces. During Sunday school children will learn about mission and make items to be sold at the Heifer Fair. They will learn that helping a family to own an animal, not only feeds the family but helps them become self sufficient.



Crafts this year include: 2nd & 3rd Grades - Glass etching, 4th & 5th Grades Candle making

The **Heifer Fair** will be *February 8th* this year. Just after the youth service.

Upcoming Events

Men's Prayer Breakfast @Wahl's	2/1 7:00 am
Mary Weller Circle	2/9 11:30 am
Optimists	2/13 12:30 pm
Naomi Circle	2/16 12:30 am
Anthony Circle	2/17 9:30 am
Evening Circle	2/23 7 pm
Not so Basic Bible study	Mondays 7:30 pm
Prayer Support Group	Mondays 11:30 am
Wednesday Evening Book Club	Wed. 7:00 monthly
Lectionary Study	Weds. 7:15 pm
Men's Ecumenical Group	Thursdays 7:15 am
Women's Bible	Fridays
Adult Study	Sundays 9:45 am

Coming up for Kid

Feb. 4: LOGOS - Talent Night
 February 8: Heifer Fair
 Feb. 11: LOGOS - "God Loves Me!"
 Feb. 18: NO LOGOS
 Feb. 25: LOGOS - Karate Night

Youth Happenings {7th-12th Grade}

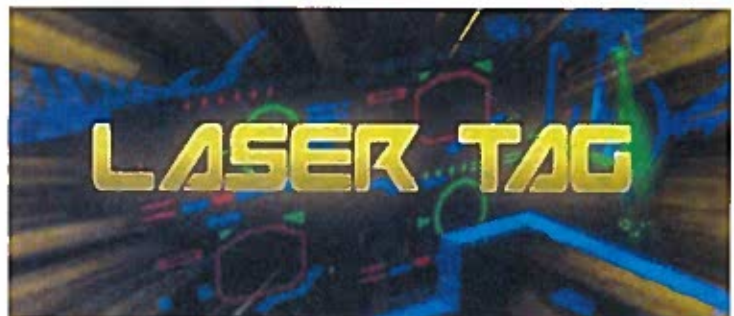
Upcoming:
**30
HOUR
FAMINE**



March 13 -14



Ticket to Mission
March 8, 15, 22, 29



PRESBYTERIAN WOMEN



MARY/WELLER ~ will meet on Monday, February 9 at 11:30 AM in Fellowship Hall. Please bring your lunch and least coin and enjoy the fellowship and help work on a new blanket. All women of the church are invited to attend. If not a regular member, please contact Shirley Lawrence.

NAOMI CIRCLE ~ Winters too long in Rochester? Come hear a presentation given by MVP's Suzanne Feather on Beating the Winter Blahs. Bring lunch and mug and join Naomi Circle on February 16 at 12:30 upstairs in room 200. Non-members welcome. Questions call 248-9229

ANTHONY CIRCLE ~ is a group of women who emphasize the fellowship and mission aspects of Presbyterian Women. We meet on the third Tuesday of the month at 9.30 am. Our next meeting will be on Tuesday February 17 at 9.30 am in Room 200 (upstairs) at the church. All women are welcome. Why don't you give us a try in the new year? For more information, contact Janette Henderson.

EVENING CIRCLE ~ will meet Monday, January 26 and February 23 at 7:00 pm in Room 200 for fellowship and discussion of Lesson 8 and Lesson 9 from The General Epistles. Lessons 8 and 9 will be on the office counter. Any questions call Margaret Mecredy 381-6430.

TWO UPDATES ON CAMERON ~ Winter clothing donations have been generous! We will take your warm, gently used items until March 7. As always, please place them in the CCM bins in Fellowship Hall, and REMEMBER to have them in bags or boxes that a normal middle-aged person can lift onto a cart and into her car. Thanks!

ALSO ~ News from the kitchen. Cameron has a new Kitchen Manager. Dave has made tremendous hygienic and organizational improvements to the Hot Lunch environment. We could use some extra hands on the first Saturday of the month, so if you would like to be a "temporary helper", let me know. This could be one time, short term or whatever you wish. Bring a church friend or your spouse. We would love to introduce you to Cameron. Questions? Liz - 223 3052.



THE OUTREACH COMMITTEE thanks the supporters of the Good News Jail and Prison Ministry. Your contribution of soft bound bibles, and inspirational Periodicals (Guide Posts, Upper Room, Presbyterian Today...) have once again been forwarded to this Mission cause. Thanks to the program supporters, early 100 items were sent at

year end. The contribution box will continue to be maintained in the Fellowship Hall for your 2015 participation. Your efforts are appreciated!